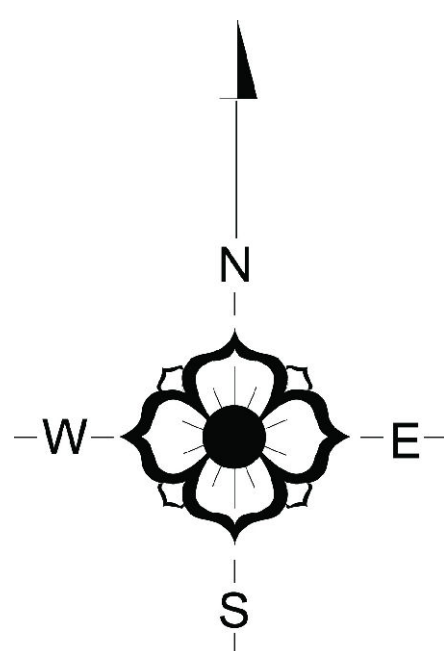
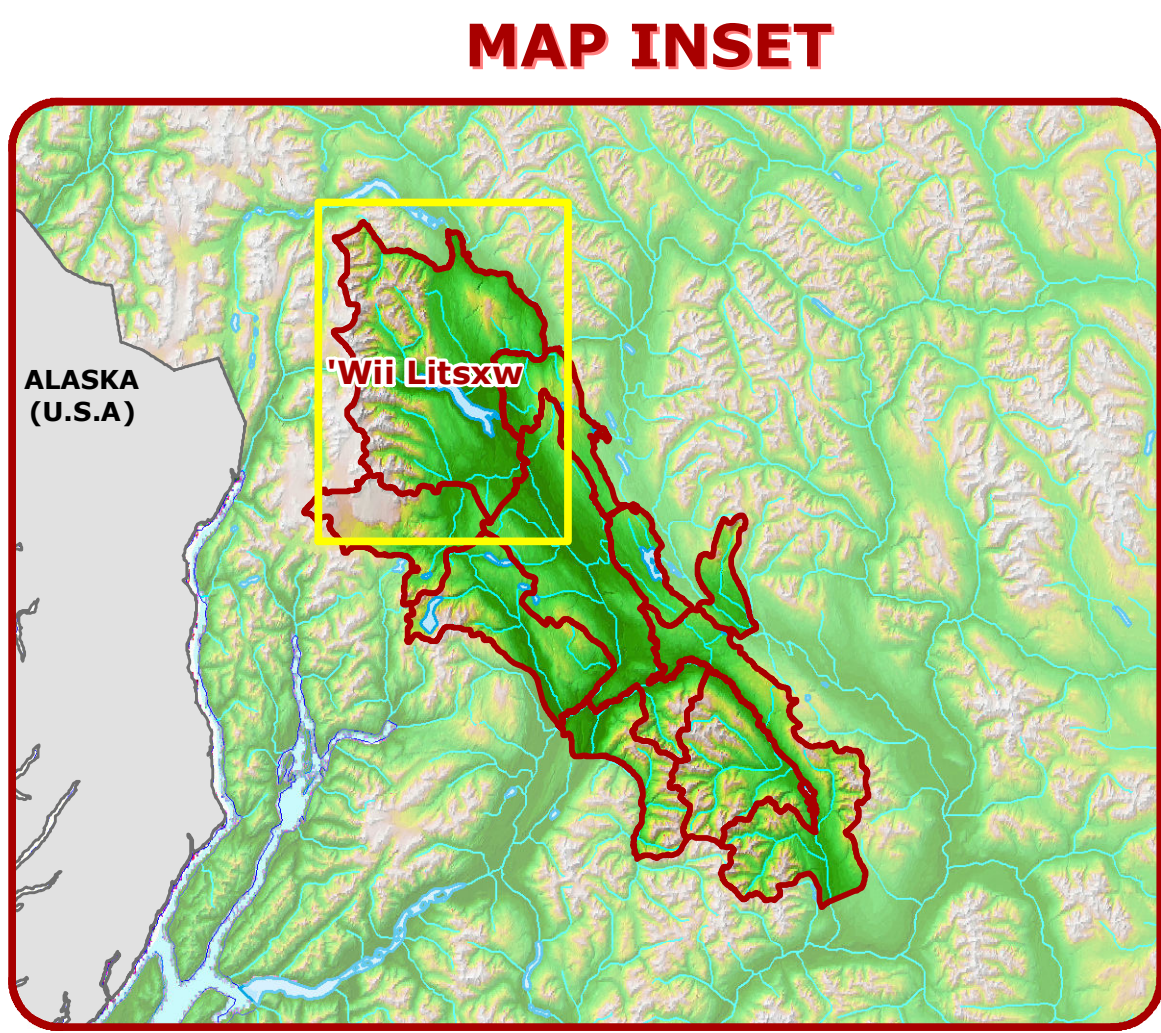
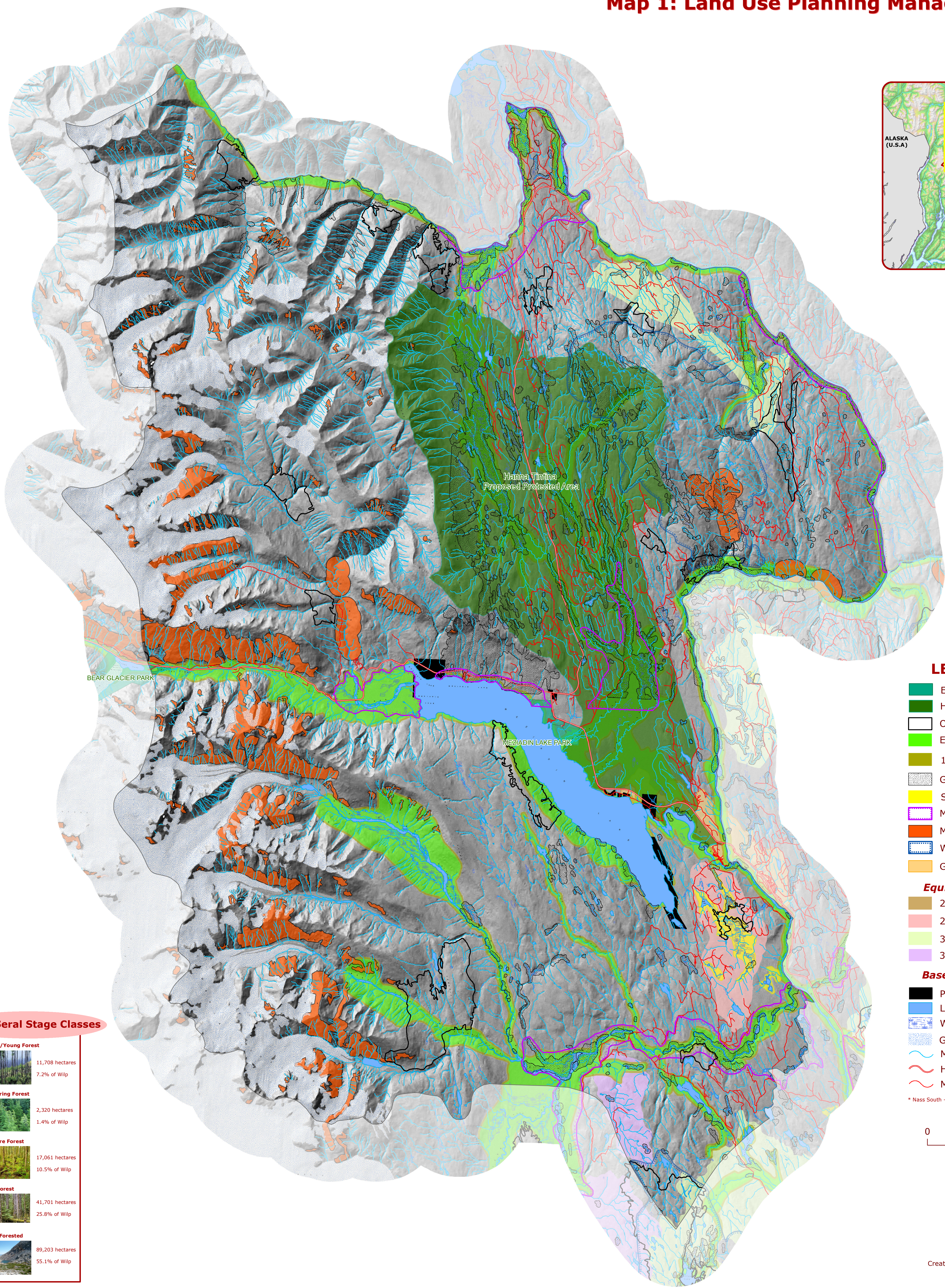


# Gitanyow Wilp - Wii Litsxw

## Map 1: Land Use Planning Management Zones



### LEGEND

- Existing Parks
- Hanna-Tintina Proposed Protected Area
- Old Growth Management Areas
- Ecosystem Network
- 100 metre EN buffer
- Grizzly Bear Habitat\*
- Special Habitat for General Wildlife
- Moose Winter Range
- Mountain Goat Winter Range
- Water Management Units
- Government Proposed Offer Parcels for Gitanyow Treaty

### Equivalent Clearcut Area

- 20 %
- 25 %
- 30 %
- 35 %

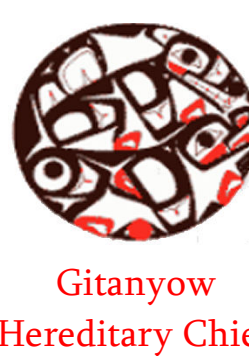
### Base Data

- Private Land
- Lakes, Major Rivers and Ocean Inlets
- Wetlands
- Glaciers
- Minor Water Courses
- Highway 37/37A
- Minor Roads or Trails

\* Nass South - Specified Areas : Cranberry - Grizzly Bear Habitat Complexes

0 5 10  
Kilometres

Map Scale 1:80,000



Created November 2011 by Regional GeoBC, FLNRO Smithers

### Forest Seral Stage Classes

<b>Early/Young Forest</b>	
	11,708 hectares 7.2% of Wilp
<b>Maturing Forest</b>	
	2,320 hectares 1.4% of Wilp
<b>Mature Forest</b>	
	17,061 hectares 10.5% of Wilp
<b>Old Forest</b>	
	41,701 hectares 25.8% of Wilp
<b>Non-Forested</b>	
	89,203 hectares 55.1% of Wilp

## Gitanyow Wilp - Wii Litsxw: Area Summaries

No Harvest Zones (pending approval: Nass)	Existing Parks Area: 242 hectares (69.4% is forest) Percentage of Wilp Covered: 0.2% (0.3% of the forest)	Hanna-Tintina Area to be Protected Area: 24,562 hectares (61.4 % is forest) Percentage of Wilp Covered: 15.0% (22.2% of the forest)	Old Growth Management Areas Area: 5,325 hectares Percentage of Wilp Covered: 3.3% (7.4 % of the forest)	Ecosystem Network Core Area: 12,412 hectares (49.8% is forest) Percentage of Wilp Covered: 7.7% (7.4% of the forest)	Grizzly Bear Specified Areas Area: 4,515 hectares (48.7% is forest) Percentage of Wilp Covered: 2.8% (3.3% of the forest)	Mountain Goat Winter Range Area: 6,576 hectares (11.6% is forest) Percentage of Wilp Covered: 5.3% (1.5% of the forest)	Proposed Gitanyow Treaty Settlement Parcels Area: 318 hectares (83.4% is forest) Percentage of Wilp Covered: 0.2% (0.4% of the forest)	Special Habitat for General Wildlife Area: 521 hectares (44.9% is forest) Percentage of Wilp Covered: 0.3% (0.3% of the forest)	Constrained Harvest Zones (pending approval: Nass)	Ecosystem Network Buffer Area: 2,105 hectares (64.1% is forest) Percentage of Wilp Covered: 2.1% (3.3% of the forest)	Moose Winter Range Units Area: 2,105 hectares (87.3% is forest) Percentage of Wilp Covered: 1.3% (2.7% of the forest)	Water Management Units Area: 4,379 hectares (61.3% is forest) Percentage of Wilp Covered: 2.7% (4.0% of the forest)	Watersheds with Forest Harvest Thresholds Area: 4,085 hectares (84.5% is forest) Percentage of Wilp Covered: 2.5% (5.1% of the forest)
<b>NO HARVEST ZONES TOTAL</b>				Area: 56,171 hectares (53.3% is forest) Percentage of the Wilp Covered: 34.7% (44.5% of the forest)									
<b>CONSTRAINED HARVEST ZONES TOTAL</b>										Area: 14,004 hectares (72.6% is forest) Percentage of the Wilp Covered: 8.7% (15.2% of the forest)			