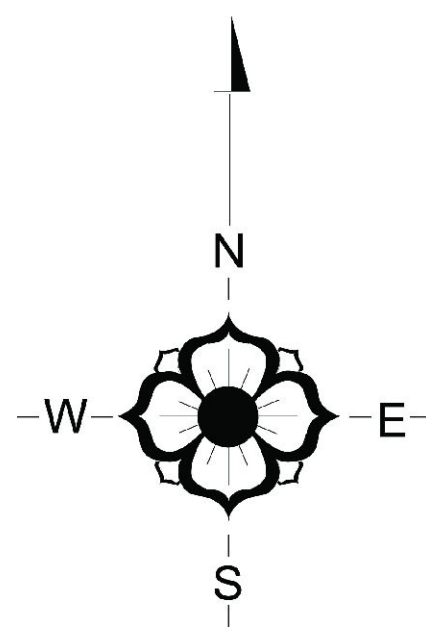
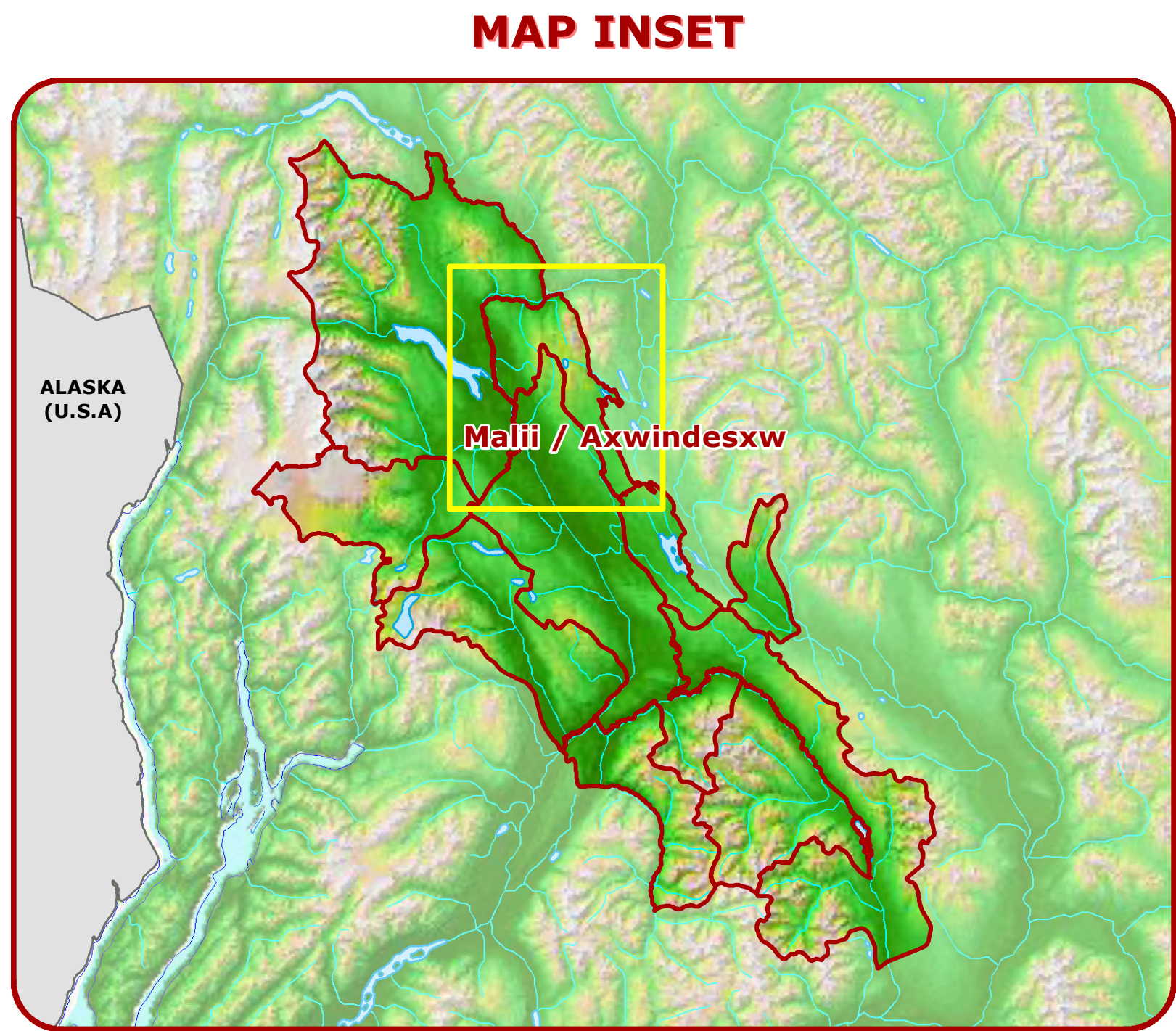
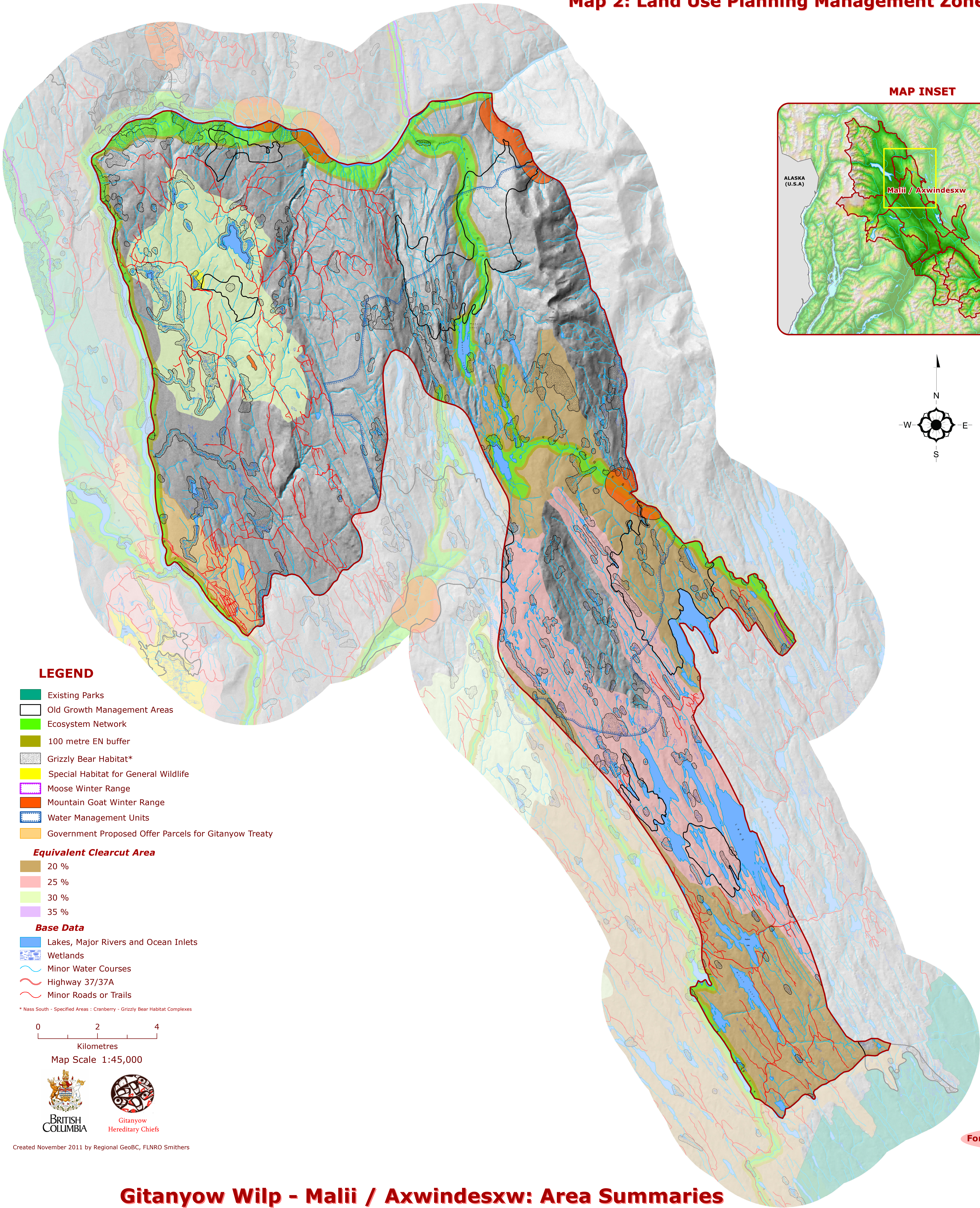


# Gitanyow Wilp - Malii Axwindesxw

## Map 2: Land Use Planning Management Zones



## Gitanyow Wilp - Malii / Axwindesxw: Area Summaries

<b>No Harvest Zones</b> (pending approval: Nass) 	<b>Old Growth Management Areas</b> Area: 3,092 hectares Percentage of Wilp Covered: 10.2% (11.4% of the forest)	<b>Ecosystem Network Core</b> Area: 1,585 hectares (72.7% is forest) Percentage of Wilp Covered: 6.4% (4.7% of the forest)	<b>Grizzly Bear Specified Areas</b> Area: 2,559 hectares (66.9% is forest) Percentage of Wilp Covered: 8.4% (6.5% of the forest)	<b>Mountain Goat Winter Range</b> Area: 237 hectares (95.0% is forest) Percentage of Wilp Covered: 0.8% (0.9% of the forest)	<b>Proposed Gitanyow Treaty Settlement Parcels</b> Area: 621 hectares (79.6% is forest) Percentage of Wilp Covered: 2.0% (2.1% of the forest)	<b>Special Habitat for General Wildlife</b> Area: 8 hectares (50.0% is forest) Percentage of Wilp Covered: <0.1% (<0.1% of the forest)	<b>Moose Winter Range</b> Area: 8 hectares (100.0% is forest) Percentage of Wilp Covered: <0.1% (<0.1% of the forest)	<b>Water Management Units</b> Area: 6,869 hectares (66.6% is forest) Percentage of Wilp Covered: 22.6% (18.6% of the forest)	<b>Watersheds with Forest Harvest Thresholds</b> Area: 7,269 hectares (81.8% is forest) Percentage of Wilp Covered: 23.9% (24.1% of the forest)
<b>NO HARVEST ZONES TOTAL</b> Area: 8,102 hectares (79.1% is forest) Percentage of the Wilp Covered: 26.6% (26.0% of the forest)						<b>CONSTRAINED HARVEST ZONES TOTAL</b> Area: 14,138 hectares (74.4% is forest) Percentage of the Wilp Covered: 46.4% (42.7% of the forest)			

### Forest Seral Stage Classes

<b>Early/Young Forest</b> 	5,030 hectares 16.5% of Wilp
<b>Maturing Forest</b> 	502 hectares 1.6% of Wilp
<b>Mature Forest</b> 	3,924 hectares 12.9% of Wilp
<b>Old Forest</b> 	15,180 hectares 49.9% of Wilp
<b>Non-Forested</b> 	5,805 hectares 19.0% of Wilp