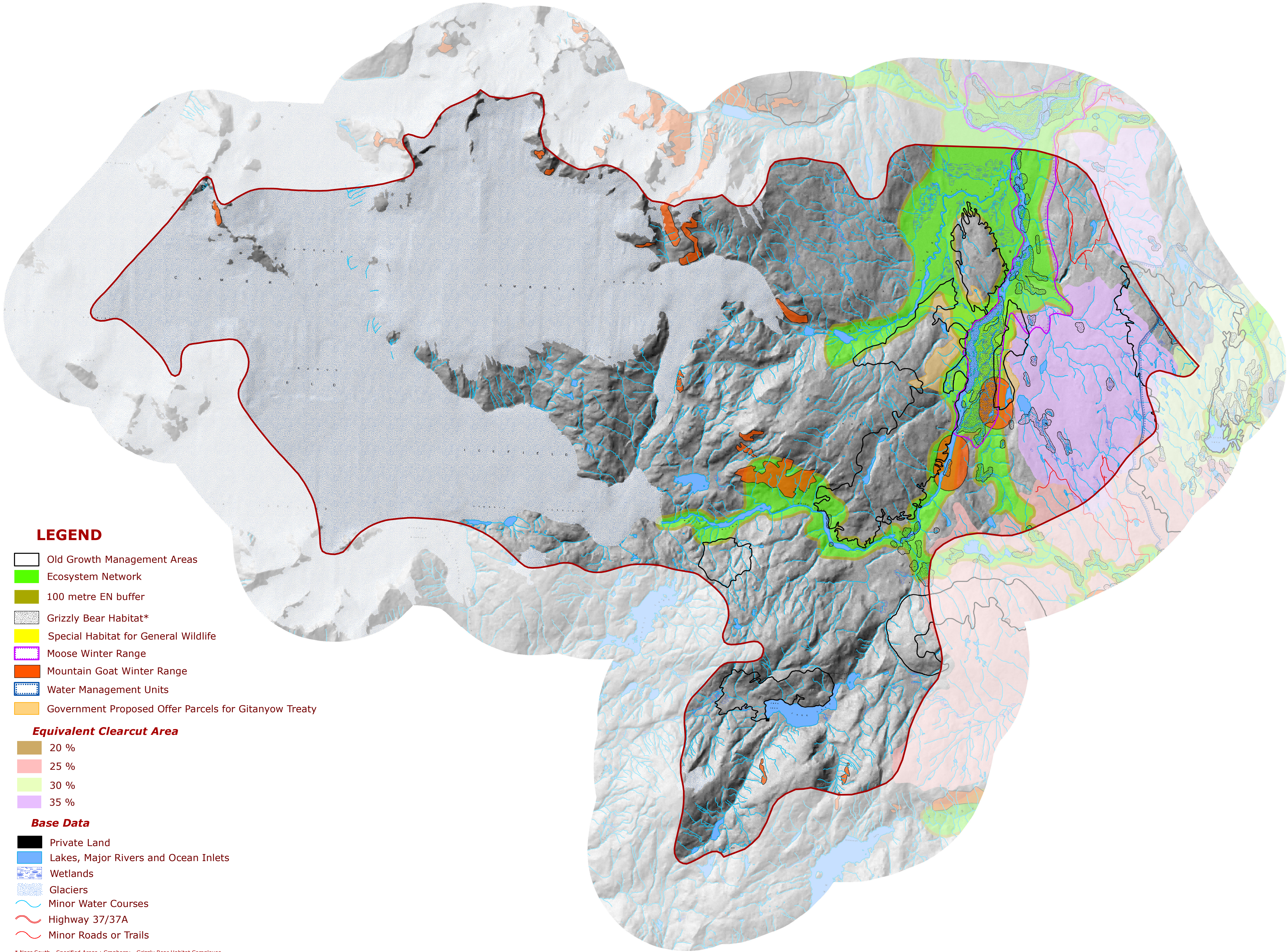
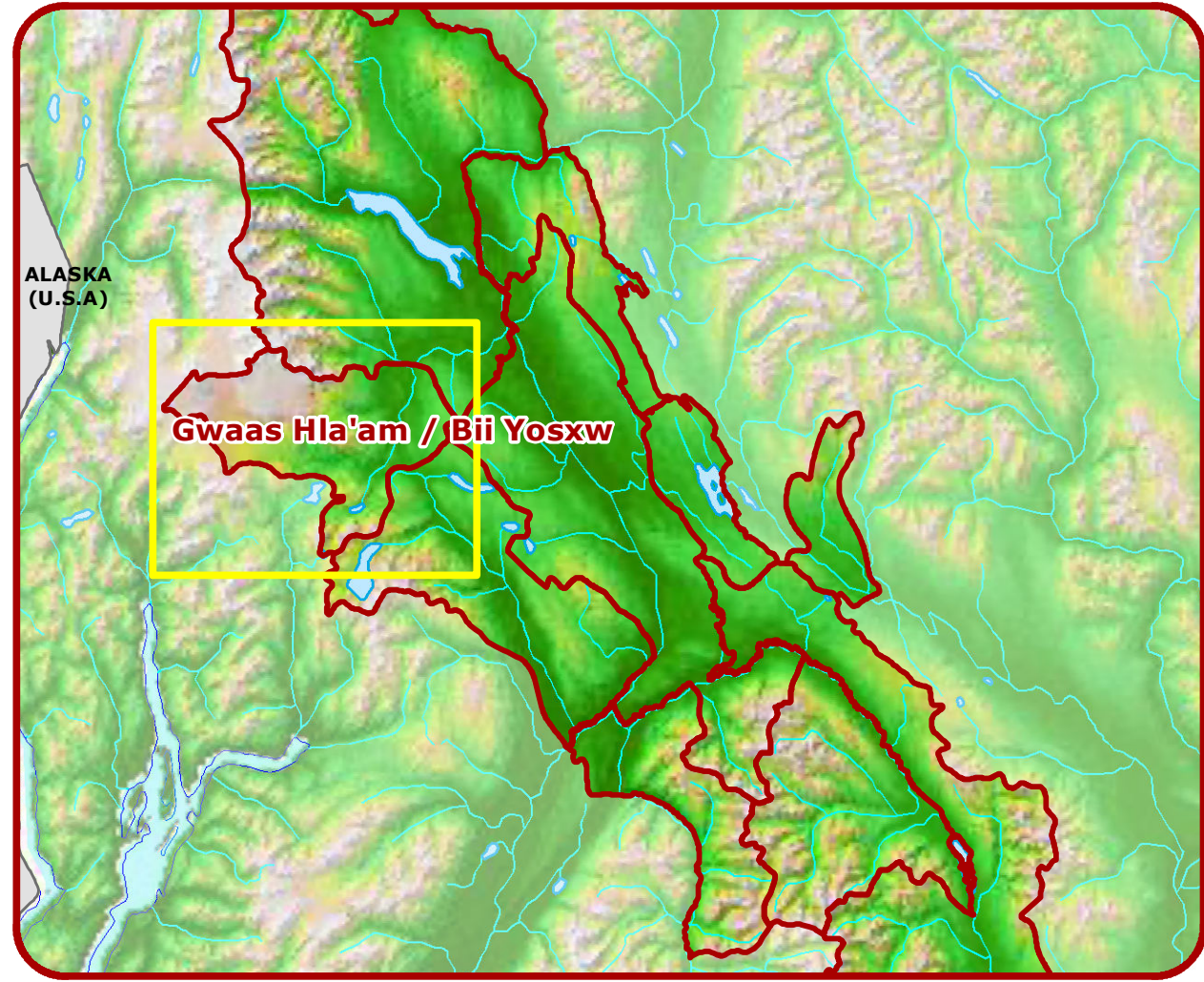


# Gitanyow Wilp - Gwaas Hla'am Bii Yosxw

## Map 3: Land Use Planning Management Zones

MAP INSET



### LEGEND

- Old Growth Management Areas
- Ecosystem Network
- 100 metre EN buffer
- Grizzly Bear Habitat\*
- Special Habitat for General Wildlife
- Moose Winter Range
- Mountain Goat Winter Range
- Water Management Units
- Government Proposed Offer Parcels for Gitanyow Treaty

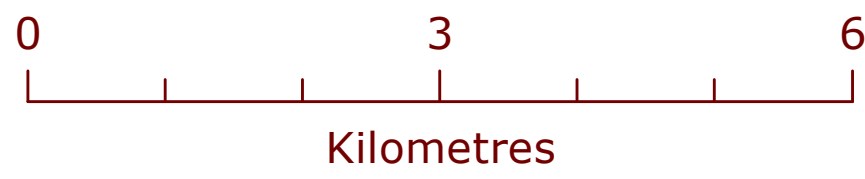
### Equivalent Clearcut Area

- 20 %
- 25 %
- 30 %
- 35 %

### Base Data

- Private Land
- Lakes, Major Rivers and Ocean Inlets
- Wetlands
- Glaciers
- Minor Water Courses
- Highway 37/37A
- Minor Roads or Trails

\* Nass South - Specified Areas : Cranberry - Grizzly Bear Habitat Complexes

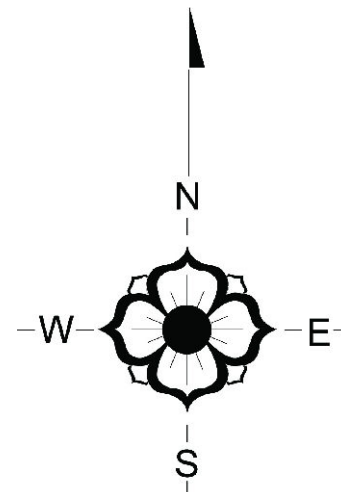


Map Scale 1:55,000



Gitanyow  
Hereditary Chiefs

Created November 2011 by Regional GeoBC, FLNRO Smithers



## Gitanyow Wilp - Gwaas Hla'am Bii Yosxw: Area Summaries

No Harvest Zones (pending approval: Nass)	Old Growth Management Areas Area: 3,968 hectares Percentage of Wilp Covered: 8.3% (24.0% of the forest)	Ecosystem Network Core Area: 4,246 hectares (44.1% is forest) Percentage of Wilp Covered: 8.8% (12.3% of the forest)	Grizzly Bear Specified Areas Area: 144 hectares (66.0% is forest) Percentage of Wilp Covered: 0.3% (0.6% of the forest)	Mountain Goat Winter Range Area: 338 hectares (26.3% is forest) Percentage of Wilp Covered: 0.7% (0.6% of the forest)	Proposed Gitanyow Treaty Settlement Parcels Area: 63 hectares (88.9% is forest) Percentage of Wilp Covered: 0.1% (0.4% of the forest)	Constrained Harvest Zones (pending approval: Nass)	Ecosystem Network Buffer Area: 552 hectares (64.7% is forest) Percentage of Wilp Covered: 1.2% (2.4% of the forest)	Moose Winter Range Area: 132 hectares (69.7% is forest) Percentage of Wilp Covered: 0.3% (0.6% of the forest)	Water Management Units Area: 67 hectares (86.6% is forest) Percentage of Wilp Covered: 0.1% (0.4% of the forest)	Watersheds with Forest Harvest Thresholds Area: 2,740 hectares (18.5% is forest) Percentage of Wilp Covered: 5.7% (18.5% of the forest)
NO HARVEST ZONES TOTAL			CONSTRAINED HARVEST ZONES TOTAL							
Area: 8,759 hectares (65.6% is forest)			Area: 3,491 hectares (14.5% is forest)							
Percentage of the Wilp Covered: 18.2% (37.9% of the forest)			Percentage of the Wilp Covered: 7.3% (3.3% of the forest)							

### Forest Seral Stage Classes

Early/Young Forest	<1.0 hectares <1.0% of Wilp
Maturing Forest	163 hectares .34% of Wilp
Mature Forest	2,236 hectares 4.7% of Wilp
Old Forest	12,774 hectares 26.6% of Wilp
Non-Forested	32,913 hectares 68.5% of Wilp