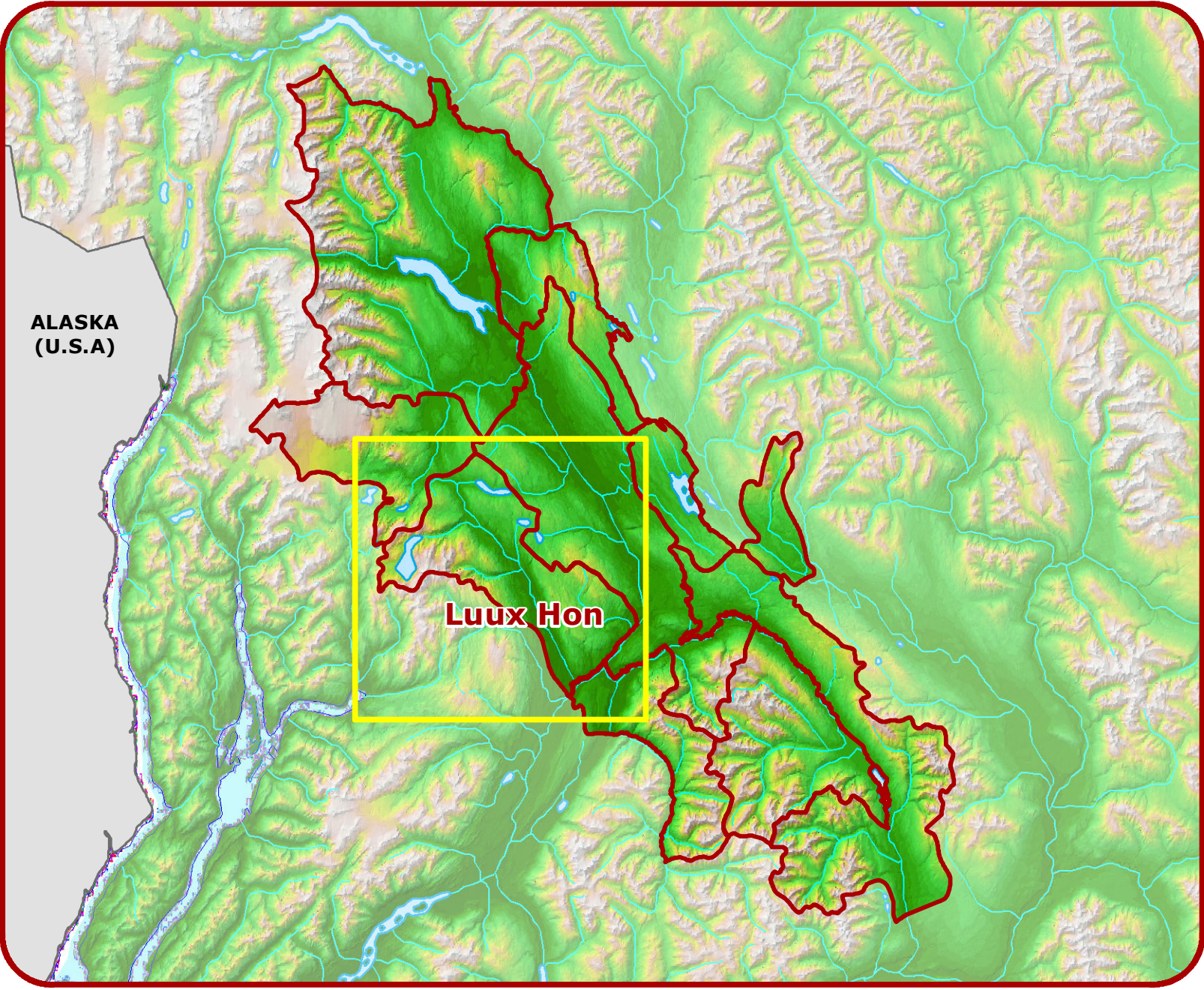
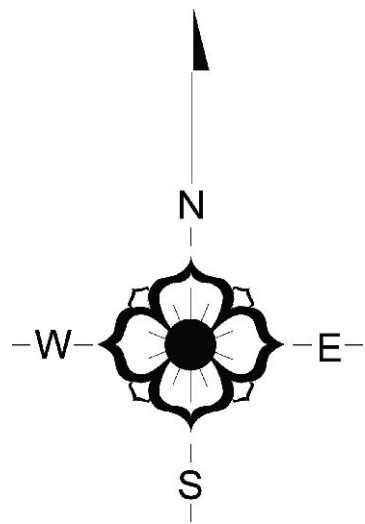


MAP INSET



Gitanyow Wilp - Luux Hon

Map 1: Land Use Planning Management Zones



LEGEND

- Old Growth Management Areas
- Ecosystem Network
- 100 metre EN buffer
- Grizzly Bear Habitat*
- Special Habitat for General Wildlife
- Moose Winter Range
- Mountain Goat Winter Range
- Water Management Units
- Government Proposed Offer Parcels for Gitanyow Treaty

Equivalent Clearcut Area

- 20 %
- 25 %
- 30 %
- 35 %

Base Data

- Private Land
- Lakes, Major Rivers and Ocean Inlets
- Wetlands
- Glaciers
- Minor Water Courses
- Highway 37/37A
- Minor Roads or Trails

* Nass South - Specified Areas : Cranberry - Grizzly Bear Habitat Complexes



Map Scale 1:60,000



Gitanyow
Hereditary Chiefs

Created November 2011 by Regional GeoBC, FLNRO Smithers

Forest Seral Stage Classes

	Early/Young Forest 3,845 hectares 6.1% of Wilp
	Maturing Forest 146 hectares 0.2% of Wilp
	Mature Forest 10,735 hectares 17.0% of Wilp
	Old Forest 30,653 hectares 48.4% of Wilp
	Non-Forested 17,941 hectares 28.3% of Wilp

Gitanyow Wilp - Luux Hon: Area Summaries

No Harvest Zones (pending approval: Nass)	Old Growth Management Areas Area: 6,895 hectares Percentage of Wilp Covered: 10.2% (1.4% of the forest)	Ecosystem Network Core Area: 6,417 hectares (70.1% is forest) Percentage of Wilp Covered: 10.1% (9.9% of the forest)	Grizzly Bear Specified Areas Area: 1,744 hectares (63.6% is forest) Percentage of Wilp Covered: 2.8% (2.5% of the forest)	Mountain Goat Winter Range Area: 2,276 hectares (82.4% is forest) Percentage of Wilp Covered: 3.6% (4.1% of the forest)	Proposed Gitanyow Treaty Settlement Parcels Area: 1,273 hectares (96.1% is forest) Percentage of Wilp Covered: 2.0% (2.7% of the forest)	Special Habitat for General Wildlife Area: 66 hectares (48.0% is forest) Percentage of Wilp Covered: 0.1% (0.1% of the forest)	Constrained Harvest Zones (pending approval: Nass)	Ecosystem Network Buffer Area: 2,121.0 hectares (89.7% is forest) Percentage of Wilp Covered: 3.4% (4.2% of the forest)	Moose Winter Range Area: 890 hectares (74.4% is forest) Percentage of Wilp Covered: 1.4% (1.5% of the forest)	Water Management Units Area: 4,649 hectares (79.4% is forest) Percentage of Wilp Covered: 7.3% (8.1% of the forest)	Watersheds with Forest Harvest Thresholds Area: 20,092 hectares (90.1% is forest) Percentage of Wilp Covered: 31.7% (40.3% of the forest)
NO HARVEST ZONES TOTAL Area: 18,693 hectares (80.7% is forest) Percentage of the Wilp Covered: 29.5% (33.3% of the forest)							CONSTRAINED HARVEST ZONES TOTAL Area: 25,631 hectares (88.3% is forest) Percentage of the Wilp Covered: 40.5% (49.8% of the forest)				