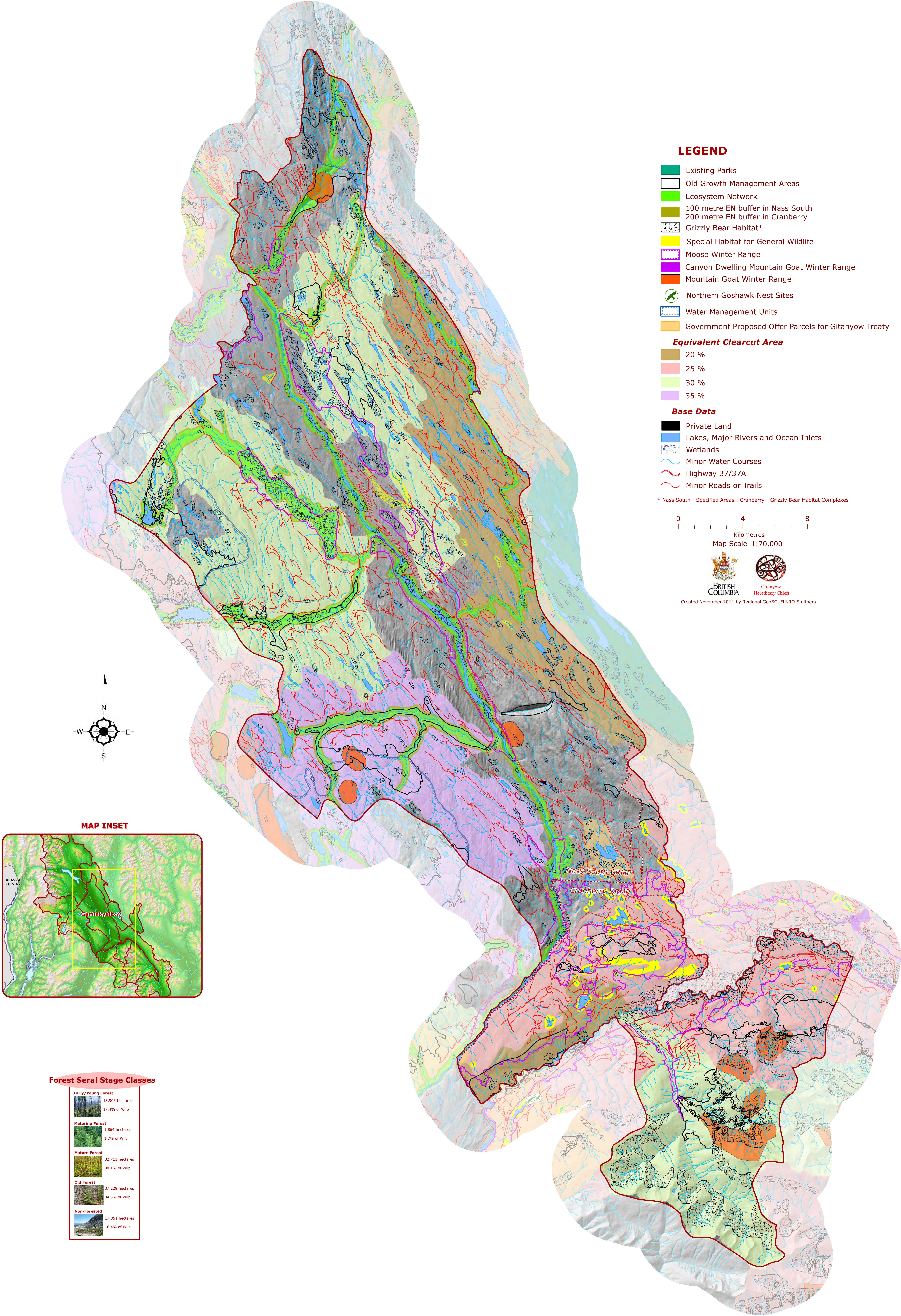
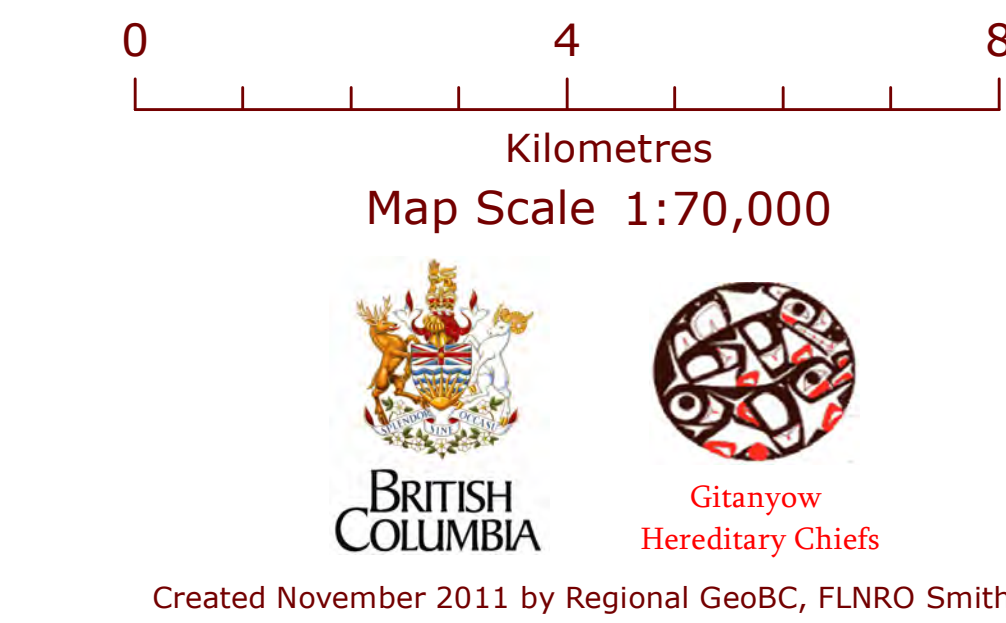


Gitanyow Wilp - Gamlakyeltxw

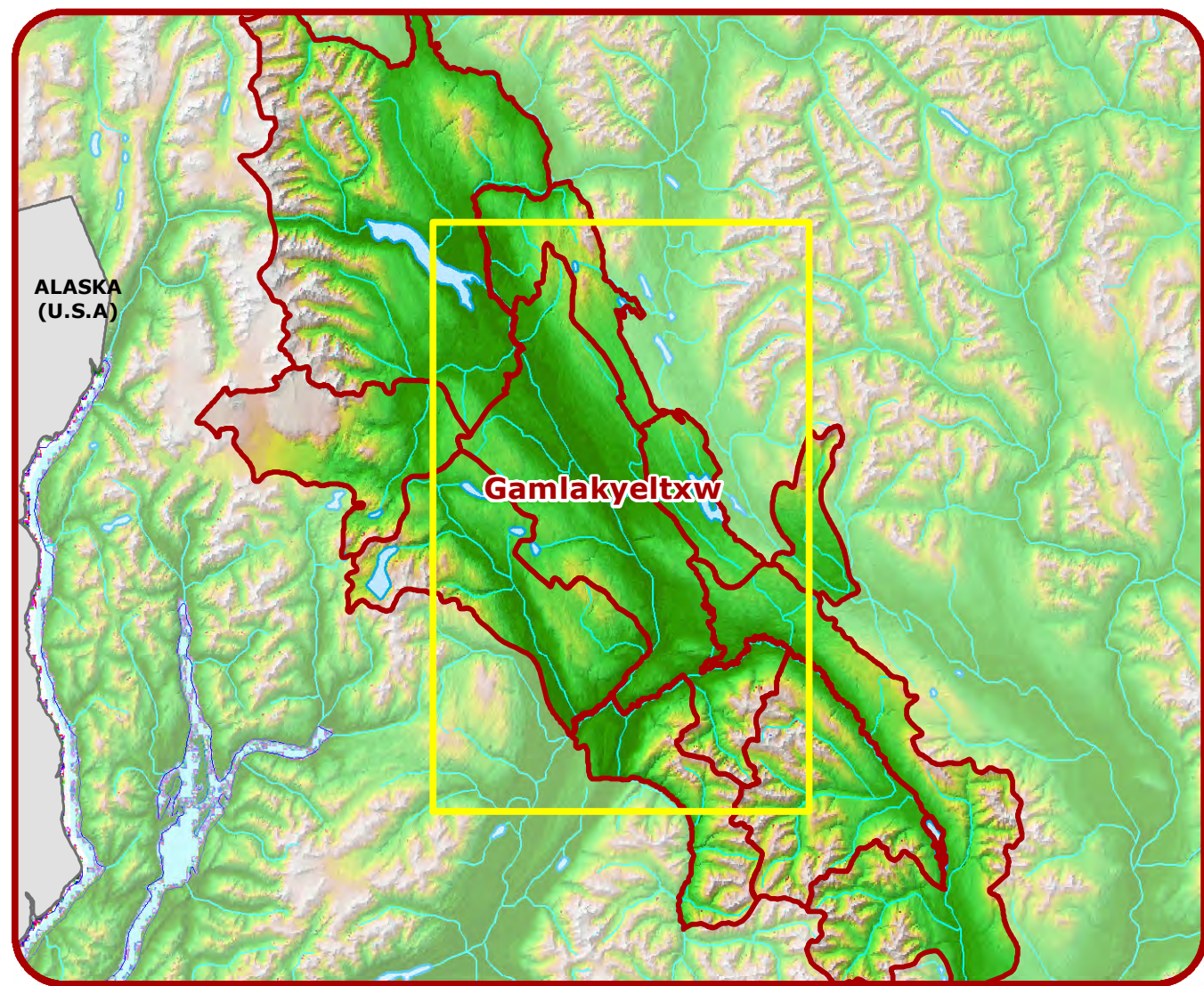
Map 5: Land Use Planning Management Zones



- LEGEND**
- Existing Parks
 - Old Growth Management Areas
 - Ecosystem Network
 - 100 metre EN buffer in Nass South
 - 200 metre EN buffer in Cranberry
 - Grizzly Bear Habitat*
 - Special Habitat for General Wildlife
 - Moose Winter Range
 - Canyon Dwelling Mountain Goat Winter Range
 - Mountain Goat Winter Range
 - Northern Goshawk Nest Sites
 - Water Management Units
 - Government Proposed Offer Parcels for Gitanyow Treaty
- Equivalent Clearcut Area**
- 20 %
 - 25 %
 - 30 %
 - 35 %
- Base Data**
- Private Land
 - Lakes, Major Rivers and Ocean Inlets
 - Wetlands
 - Minor Water Courses
 - Highway 37/37A
 - Minor Roads or Trails
- * Nass South - Specified Areas : Cranberry - Grizzly Bear Habitat Complexes



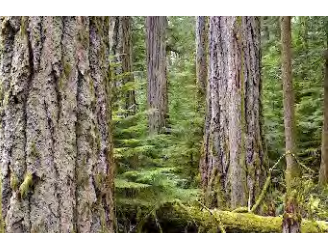
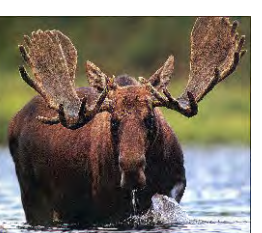
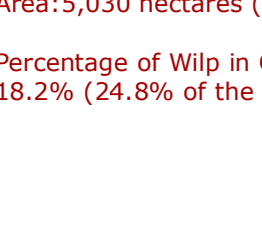
MAP INSET



Forest Seral Stage Classes

	16,905 hectares 17.4% of Wilp
	1,864 hectares 1.7% of Wilp
	32,711 hectares 30.1% of Wilp
	37,229 hectares 34.3% of Wilp
	17,851 hectares 16.4% of Wilp

Gitanyow Wilp - Gamlakyeltxw: Area Summaries

No Harvest Zones (pending approval: Nass)	Old Growth Management Areas	Ecosystem Network Core	Grizzly Bear Habitat Areas	Mountain Goat Winter Range	Proposed Gitanyow Treaty Settlement Parcels	High Value Patch Habitats	Constrained Harvest Zones (pending approval: Nass)	Moose Winter Range	Water Management Units	Watersheds with Forest Harvest Thresholds	Ecosystem Network Buffer
	Area: 6,312 hectares Percentage of Wilp in Nass Covered: 7.8% (9.3% of the forest)	Area: 6,701 hectares (66.5% is forest) Percentage of Wilp in Nass Covered: 8.3% (6.6% of the forest)	Area: 3,541 hectares (67.2% is forest) Percentage of Wilp in Nass Covered: 4.4% (3.5% of the forest)	Area: 363 hectares (87.6% is forest) Percentage of Wilp in Nass Covered: 0.5% (0.5% of the forest)	Area: 627 hectares (82.3% is forest) Percentage of Wilp in Nass Covered: 0.8% (0.8% of the forest)	Area: 270 hectares (52.7% is forest) Percentage of Wilp in Nass Covered: 0.4% (0.3% of the forest)		Area: 2,503 hectares (86.2% is forest) Percentage of Wilp in Nass Covered: 3.1% (3.2% of the forest)	Area: 3,960 hectares (77.8% is forest) Percentage of Wilp in Nass Covered: 4.9% (4.5% of the forest)	Area: 3,458 hectares (92.2% is forest) Percentage of Wilp in Nass Covered: 44.0% (48.0% of the forest)	Area: 3,228 hectares (91.9% is forest) Percentage of Wilp in Nass Covered: 4.0% (4.4% of the forest)
No Harvest Zones (pending review and approval: Cranberry)	Area: 3,114 hectares Percentage of Wilp in Cran. Covered: 11.2% (16.3% of the forest)	Area: 3,673 hectares (74.9% is forest) Percentage of Wilp in Cran. Covered: 13.3% (14.2% of the forest)	Area: 3,158 hectares (21.3% is forest) Percentage of Wilp in Cran. Covered: 11.4% (3.5% of the forest)	Area: 585 hectares (8.9% is forest) Percentage of Wilp in Cran. Covered: 2.3% (0.3% of the forest)	Area: 5 hectares (<0.1% is forest) Percentage of Wilp in Cran. Covered: <0.1% (<0.1% of the forest)	Area: 695 hectares (87.2% is forest) Percentage of Wilp in Cran. Covered: 2.5% (3.1% of the forest)		Area: 5,030 hectares (95.4% is forest) Percentage of Wilp in Cran. Covered: 18.2% (24.8% of the forest)	Area: 5,317 hectares (43.5% is forest) Percentage of Wilp Covered: 19.2 (13.0% of the forest)		Area: 934 hectares (89.0% is forest) Percentage of Wilp Covered: 3.4% (4.3% of the forest)
NO HARVEST TOTALS	Area: 9,426 hectares Percentage of Wilp Covered: 8.7% (10.8% of the forest)	Area: 10,374 hectares (69.5% is forest) Percentage of Wilp Covered: 9.6% (8.2% of the forest)	Area: 6,699 hectares (45.5% is forest) Percentage of Wilp Covered: 6.2% (3.5% of the forest)	Area: 948 hectares (39.0% is forest) Percentage of Wilp Covered: 0.9% (0.4% of the forest)	Area: 633 hectares (81.7% is forest) Percentage of Wilp Covered: 0.6% (0.6% of the forest)	Area: 974 hectares (77.3% is forest) Percentage of Wilp Covered: 0.9% (0.9% of the forest)	CONSTRAINED HARVEST TOTALS	Area: 5,030 hectares (92.3% is forest) Percentage of Wilp Covered: 6.9% (8.0% of the forest)	Area: 9,277 hectares (67.6% is forest) Percentage of Wilp Covered: 8.6% (7.2% of the forest)	Area: 35,458 hectares (92.2% is forest) Percentage of Wilp Covered: 32.7% (37.4% of the forest)	Area: 934 hectares (91.2% is forest) Percentage of Wilp in Cran. Covered: 3.8% (4.3% of the forest)
NO HARVEST ZONES GRAND TOTAL			Area: 29,054 hectares (41.0% is forest) Percentage of the Wilp Covered: 26.8% (13.6% of the forest)			CONSTRAINED HARVEST ZONES GRAND TOTAL			Area: 56,430 hectares (88.1% is forest) Percentage of the Wilp Covered: 52.0% (56.8% of the forest)		