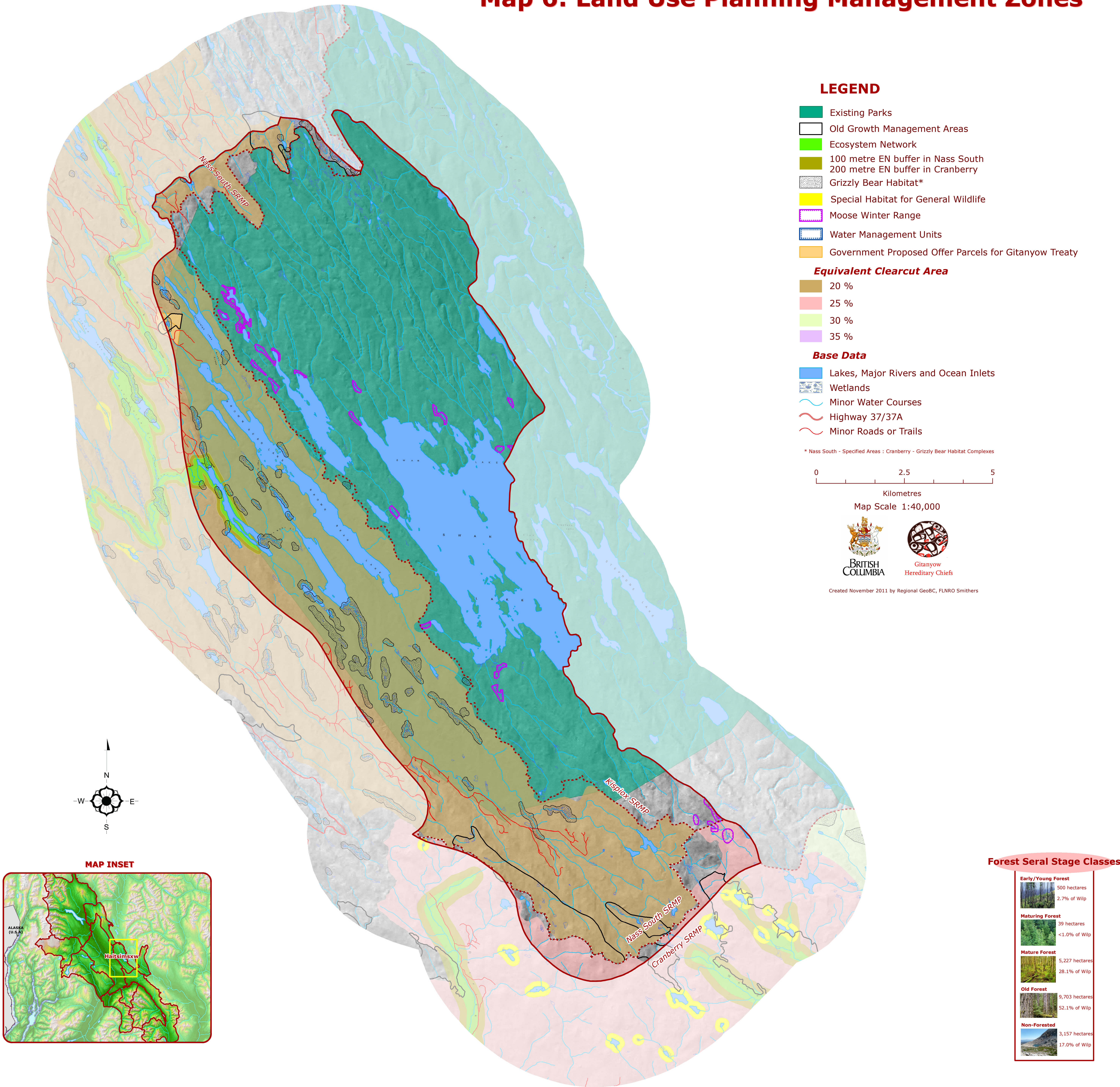


Gitanyow Wilp - Haitsimsxw

Map 6: Land Use Planning Management Zones



LEGEND

- Existing Parks
- Old Growth Management Areas
- Ecosystem Network
- 100 metre EN buffer in Nass South
- 200 metre EN buffer in Cranberry
- Grizzly Bear Habitat*
- Special Habitat for General Wildlife
- Moose Winter Range
- Water Management Units
- Government Proposed Offer Parcels for Gitanyow Treaty

Equivalent Clearcut Area

- 20 %
- 25 %
- 30 %
- 35 %

Base Data

- Lakes, Major Rivers and Ocean Inlets
- Wetlands
- Minor Water Courses
- Highway 37/37A
- Minor Roads or Trails

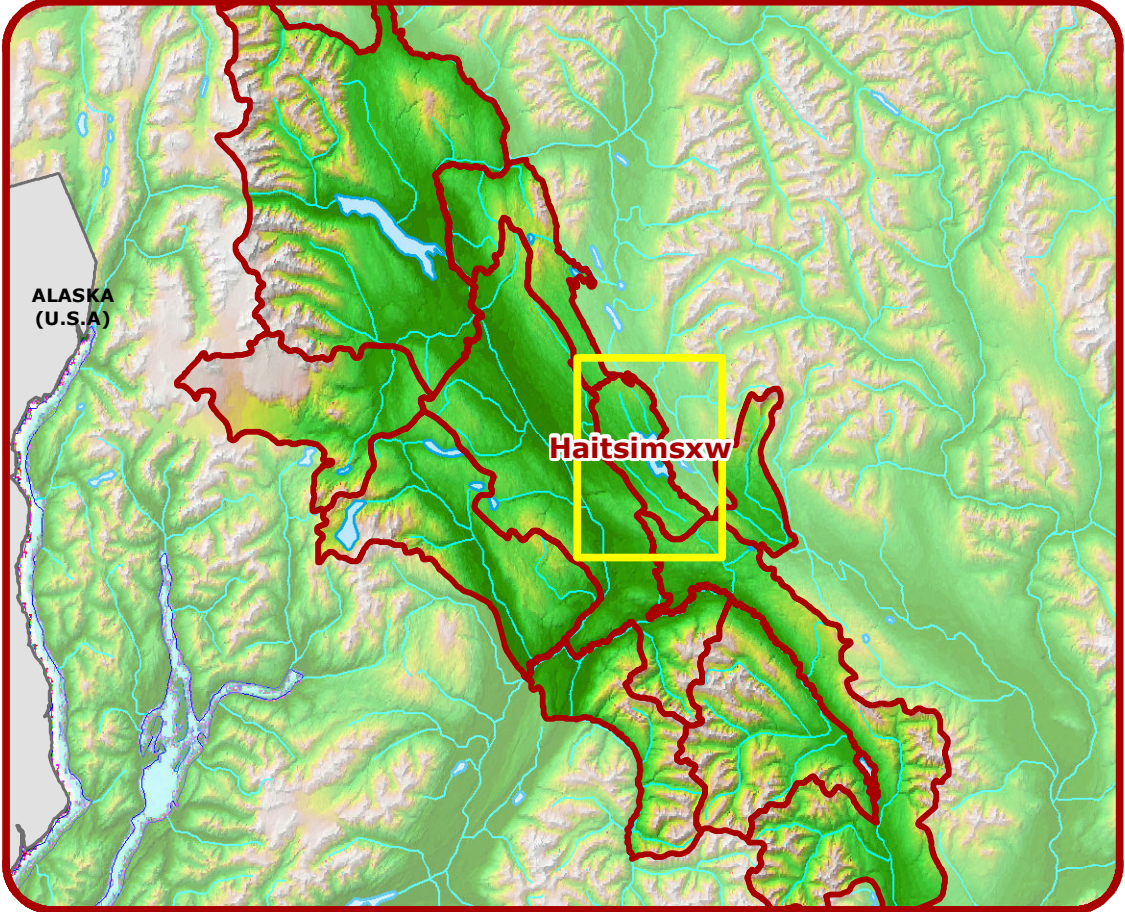
* Nass South - Specified Areas : Cranberry - Grizzly Bear Habitat Complexes

0 2.5 5
Kilometres
Map Scale 1:40,000



Created November 2011 by Regional GeobC, FLNRO Smithers

MAP INSET



Forest Seral Stage Classes

Early/Young Forest	500 hectares 2.7% of Wilp
Maturing Forest	39 hectares <1.0% of Wilp
Mature Forest	5,227 hectares 28.1% of Wilp
Old Forest	9,703 hectares 52.1% of Wilp
Non-Forested	3,157 hectares 17.0% of Wilp

Gitanyow Wilp - Haitsimsxw: Area Summaries

No Harvest Zones (pending approval: Nass* legal: Kispiox*) <small>* Existing Park is legal in both Nass and Kispiox</small>	Existing Park Area: 14,101 hectares (79.1% is forest) Percentage of Wilp in Nass/Kispiox Covered: 78.7% (75.5% of the forest)	Old Growth Management Areas Area: 557 hectares Percentage of Wilp in Nass/Kispiox Covered: 3.1% (3.8% of the forest)	Ecosystem Network Core Area: 58 hectares (96.6% is forest) Percentage of Wilp in Nass/Kispiox Covered: 0.3% (0.4% of the forest)	Grizzly Bear Habitat Complexes Area: 87 hectares (66.7% is forest) Percentage of Wilp in Nass/Kispiox Covered: 0.5% (0.4% of the forest)	Proposed Gitanyow Treaty Settlement Parcels Area: 13 hectares (100.0% is forest) Percentage of Wilp in Nass/Kispiox Covered: 0.1% (0.1% of the forest)	Constrained Harvest Zones (pending approval: Nass legal: Kispiox*) <small>* Kispiox includes Moose Winter Range only</small>	Moose Winter Range Area: 13 hectares (92.3% is forest) Percentage of Wilp in Nass/Kispiox Covered: 0.1% (0.1% of the forest)	Watersheds with Forest Harvest Thresholds Area: 2,616 hectares (97.8% is forest) Percentage of Wilp in Nass/Kispiox Covered: 14.6% (17.3% of the forest)	Ecosystem Network Buffer Area: 36 hectares (100% is forest) Percentage of Wilp Covered: 0.2% (0.2% of the forest)
	No Harvest Zones (pending review and approval: Cranberry)	Area: 57 hectares Percentage of Wilp in Cran. Covered: 8.0% (8.7% of the forest)				Constrained Harvest Zones (pending review and approval: Cranberry)	Area: 13 hectares (84.6% is forest) Percentage of Wilp in Nass/Kispiox Covered: 1.8% (1.7% of the forest)		
NO HARVEST TOTALS	Existing Park Area: 14,101 hectares (79.1% is forest) Percentage of Wilp Covered: 75.7% (72.3% of the forest)	Old Growth Management Areas Area: 614 hectares Percentage of Wilp Covered: 3.3% (4.0% of the forest)	Ecosystem Network Core Area: 58 hectares (96.6% is forest) Percentage of Wilp Covered: 0.3% (0.4% of the forest)	Grizzly Bear Habitat Areas Area: 87 hectares (66.7% is forest) Percentage of Wilp Covered: 0.5% (0.4% of the forest)	Proposed Gitanyow Treaty Settlement Parcels Area: 13 hectares (100.0% is forest) Percentage of Wilp Covered: 0.1% (0.1% of the forest)	CONSTRAINED HARVEST TOTALS	Moose Winter Range Area: 26 hectares (88.5% is forest) Percentage of Wilp Covered: 0.1% (0.2% of the forest)	Watersheds with Forest Harvest Thresholds Area: 2,616 hectares (97.8% is forest) Percentage of Wilp Covered: 14.0% (16.6% of the forest)	Ecosystem Network Buffer Area: 36 hectares (100% is forest) Percentage of Wilp Covered: 0.2% (0.2% of the forest)
NO HARVEST ZONES GRAND TOTAL			Area: 14,873 hectares (79.9% is forest) Percentage of the Wilp Covered: 79.8% (77.1% of the forest)			CONSTRAINED HARVEST ZONES GRAND TOTAL			Area: 2,678 hectares (97.8% is forest) Percentage of the Wilp Covered: 14.4% (17.0% of the forest)