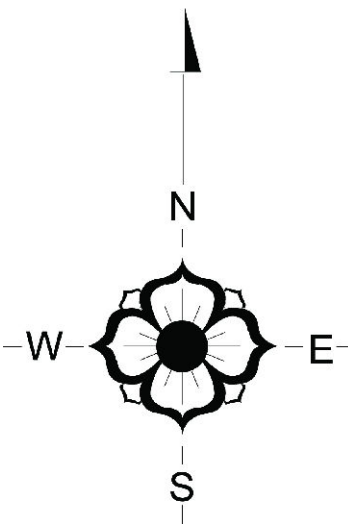
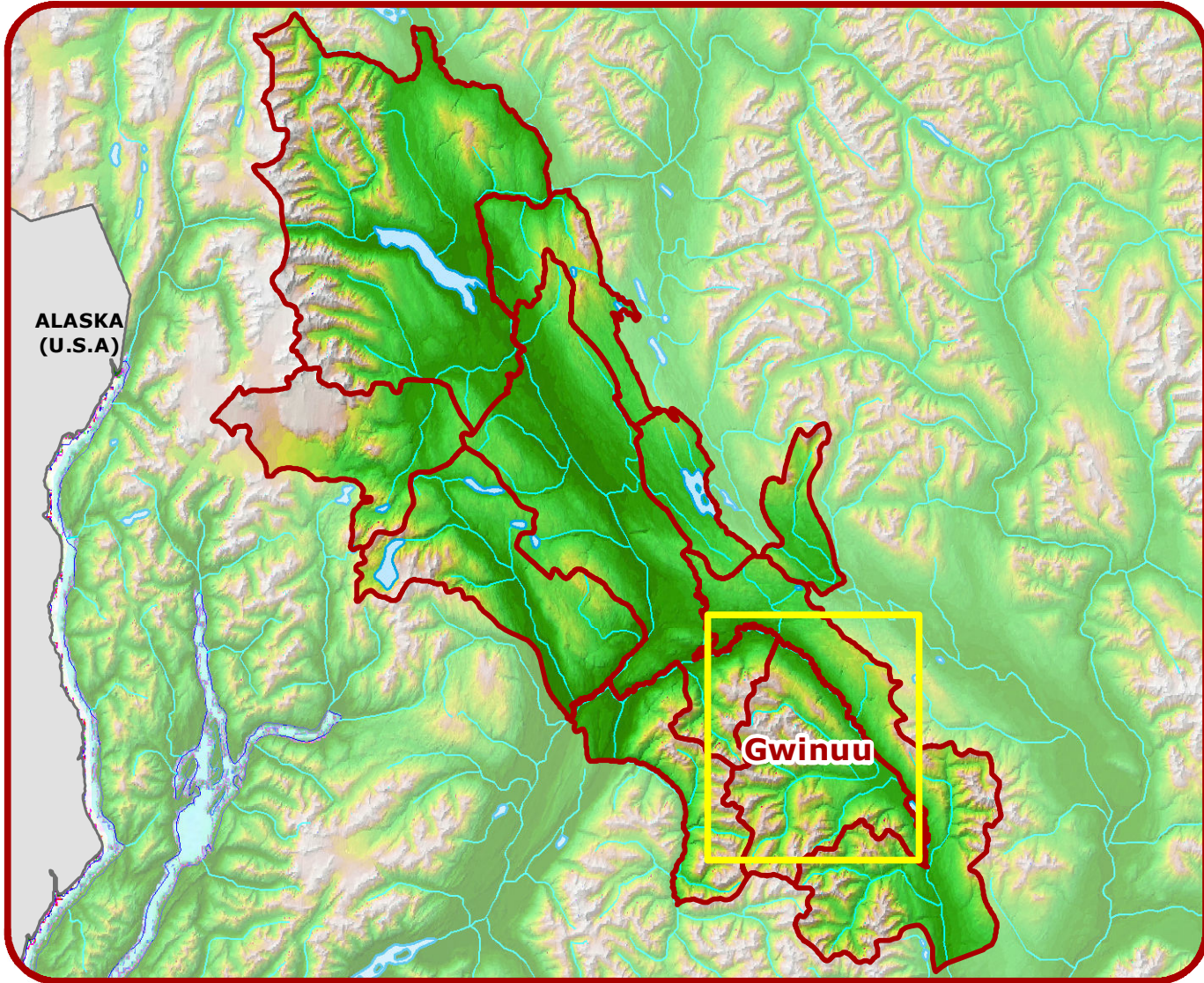


MAP INSET



Gitanyow Wilp - Gwinuu

Map 9: Land Use Planning Management Zones

LEGEND

- Gitanyow Cedar Stand Reserves*
- Old Growth Management Areas
- Ecosystem Network
- 200 metre EN buffer
- Grizzly Bear Habitat**
- Special Habitat for General Wildlife
- Moose Winter Range
- Canyon Dwelling Mountain Goat Winter Range
- Mountain Goat Winter Range
- Northern Goshawk Nest Sites
- Water Management Units
- Gitanyow Lake Reserve
- Government Proposed Offer Parcels for Gitanyow Treaty

Equivalent Clearcut Area

- 20 %
- 25 %
- 30 %

Base Data

- Lakes, Major Rivers and Ocean Inlets
- Wetlands
- Minor Water Courses
- Highway 37/37A
- Minor Roads or Trails

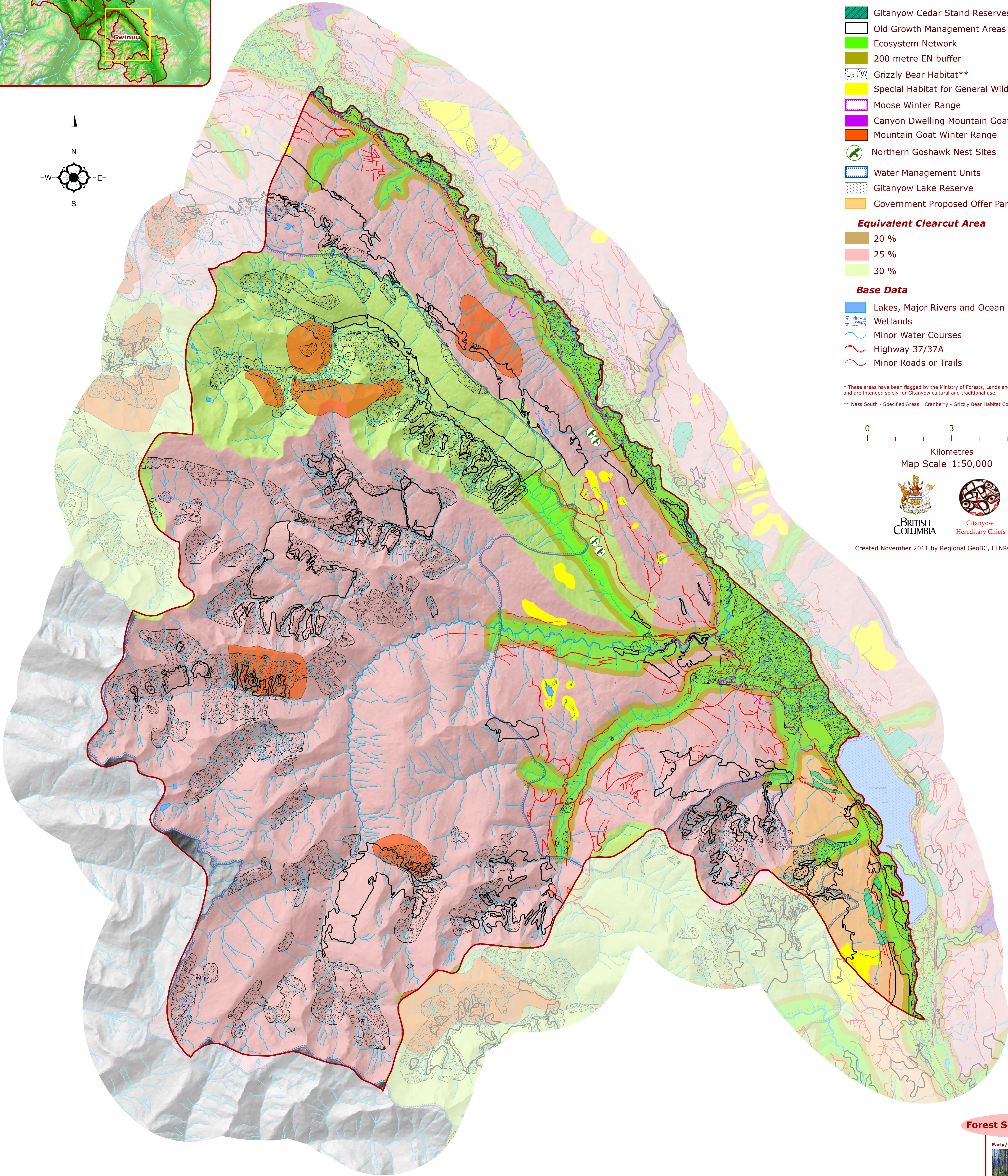
* These areas have been flagged by the Ministry of Forests, Lands and Natural Resource Operations and are intended solely for Gitanyow cultural and traditional use.
** Nass South - Specified Areas : Cranberry - Grizzly Bear Habitat Complexes

0 3 6
Kilometres

Map Scale 1:50,000



Created November 2011 by Regional GeoBC, FLNRO Smithers



Gitanyow Wilp - Gwinuu: Area Summaries

No Harvest Zones (pending review and approval: Cranberry)	Old Growth Management Areas Area: 5,741 hectares Percentage of Wilp Covered: 10.4% (15.9% of the forest)	Ecosystem Network Core Area: 5,013 hectares (80.0% is forest) Percentage of Wilp Covered: 9.1% (11.3% of the forest)	Grizzly Bear Habitat Complexes Area: 8,430 hectares (27.6% is forest) Percentage of Wilp Covered: 15.3% (6.5% of the forest)	Mountain Goat Winter Range Area: 1,012 hectares (40.1% is forest) Percentage of Wilp Covered: 1.8% (1.1% of the forest)	Proposed Gitanyow Treaty Settlement Parcels Area: 1,339 hectares (91.1% is forest) Percentage of Wilp Covered: 2.0% (3.4% of the forest)	Special Habitat for General Wildlife Area: 266 hectares (86.1% is forest) Percentage of Wilp Covered: 0.5% (0.6% of the forest)	Constrained Harvest Zones (pending review and approval: Cranberry)	Ecosystem Network Buffer Area: 1,279 hectares (91.7% is forest) Percentage of Wilp Covered: 2.9% (4.1% of the forest)	Moose Winter Range Area: 1,047 hectares (87.7% is forest) Percentage of Wilp Covered: 1.9% (2.6% of the forest)	Water Management Units Area: 21,886 hectares (53.1% is forest) Percentage of Wilp Covered: 39.4% (32.4% of the forest)
NO HARVEST ZONES TOTAL Area: 21,801 hectares (63.5% is forest) Percentage of the Wilp Covered: 39.6% (38.9% of the forest)							CONSTRAINED HARVEST ZONES TOTAL Area: 24,312 hectares (57.1% is forest) Percentage of the Wilp Covered: 44.2% (39.0% of the forest)			

Forest Seral Stage Classes

Early/Young Forest 	2,976 hectares 5.4% of Wilp
Maturing Forest 	2,763 hectares 5.0% of Wilp
Nature Forest 	10,535 hectares 19.1% of Wilp
Old Forest 	19,246 hectares 35.0% of Wilp
Non-Forested 	19,480 hectares 35.4% of Wilp